

INSTRUCTION MANUAL

67075c

Read all the instruction carefully before you use
the appliance and keep it for future use.

Before you use the power tool, read and comply with these instructions.



MARKSMAN
QUALITY TOOLS

950W POLISHING MACHINE



- 230V~50Hz
 - 950w
 - 3500-11000RPM
 - 115/180MMdisc
- 5 AMP fuse (max)
must be fitted to plug
attached to this cable.

RoHS ✓



5 038673 670751

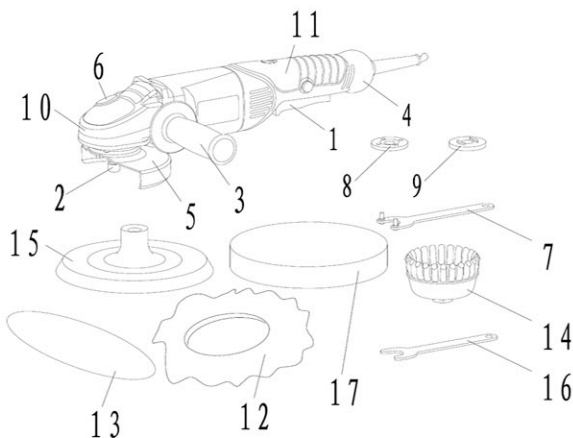
MARKSMAN B20 3BT UK

Before you use the power tool, read and comply with these instructions.



Overview

1. Safety switch
2. Driver shaft
3. Side handle
4. Handle
5. Protective cover
6. Lock button
7. Special Spanner I
8. External flange with thread
9. Internal flange
10. Gear box
11. Buff
12. Wool bonnet
13. Sanding paper
14. Twist wire cup brush
15. Polishing pad
16. Special Spanner II
17. Sponge wheel



WARNING! When using power tools. ALWAYS comply with the following basic safety precautions to prevent electric shock and reduce the risk of personal injury and fire. Before you use the power tool, read and comply with these instructions.

Keep the safety instructions in a safe place!

a) Work area

1. Keep the work area tidy and well lit. Cluttered benches and dark areas is an accident hazard.

2. Do not operate power tools in explosive atmospheres, such as in the presence of flammable liquids, gases, or dust. Power tools create sparks which may ignite the dust or fumes.
3. Keep bystanders, children, and visitors away while operating a power tool. Distractions can cause you to lose control.

b) Electricity safety

1. Avoid coming into contact with grounded parts(e.g. pipes, radiators, stoves, refrigerators)!
2. Don't expose power tools to rain or wet conditions. Water entering a power tool will increase the risk of electric shock.
3. Do not abuse the cord. Never use the cord to carry the tools or pull the plug from an outlet. Keep cord away from heat, oil, sharp edges or moving parts. Replace damaged cords immediately. Damaged cords increase the risk of electric shock.
4. When operating a power tool outside, use an outdoor extension cord marked "W-A" or "W." These cords are rated for outdoor use and reduce the risk of electric shock.

c) Human body safety

1. Always be careful! Do not use the tool if you are not concentrated! Watch what you are doing. Use common sense. If You are tired, do NOT operate the power tool.
2. Usage safety equip! Also use face dust mask if working operation is dusty. Wear eye and ear protection .When working outdoor ,it is advisable to wear rubber gloves and skid-proof shoes!
3. Avoid the accidental starting of the tool! Make sure that the switch is off when connecting to the mains!
4. Before switching ON the power tool, remove any keys and wrenches.
5. Avoid unusual body postures! Always stand firmly in place and keep your balance! Always keep the tool in good order!
6. Do not wear baggy cloths or jewellery! Risk of being caught by moving parts! If you have long hair, wear a hairnet!

d) Use the correct power tool and Be alert

1. Do not force tool. Use the correct tool for your application. The correct tool will do the job better and safer at the rate for which it is designed.
2. Do not use tool if switch does not turn it on or off, Any tool that cannot be controlled with the switch is dangerous and must be repaired.
3. Disconnect the plug from the power source before making any adjustments, changing accessories, or storing the tool. Such preventive safety measures reduce the risk of starting the tool accidentally.
4. Store idle tools out of reach of children and other untrained persons. Tools are dangerous in the hands of untrained users.
5. Check for misalignment or binding of moving parts, breakage of parts, and any other condition that may affect the tools operation. If damaged, have the tool serviced before using. Many accidents are caused by poorly maintained tools.
6. Maintain tools with care. Keep cutting tools sharp and clean, Properly maintained tools with sharp cutting edges are less likely to bind and are easier to control.
7. Use only accessories that are recommended by the manufacturer for your model. Accessories

that may be suitable for one tool, may become hazardous when used on another tool.

SERVICE

1. Tool service must be performed only by qualified repair personnel. service or maintenance performed by unqualified personnel could result in a risk of injury.
2. When servicing a tool, use only identical replacement parts, Follow instructions in the maintenance section of this manual. Use of unauthorized parts or failure to follow Maintenance Instructions may create a risk of electric shock or injury.

WARNING!

1. For you own safety always use only the accessories and attachments specified in the operating instructions or recommended or specified by the tool manufacturer!
2. The use of accessories and attachments other than those specified in the operating instructions can cause injuries!
3. Always have your tool be repaired by certified technicians!
4. This tool meets the relevant safety requirements!
5. Repairs are to be carried out only by qualified technicians with original spare parts to avoid the risk of injuries to the user caused by improper repairs!
6. In case of a sound pressure greater than 85.0dB(A) wear hearing protection to avoid damage to your hearing!

Special Safety Instructions

1. Do not use the machine without the protective cover! Ensure that this is fitted correctly!
2. Ensure that the speed of the machine is suitable for the accessories. Allow a newly mounted abrasive wheel to run without a load for at least thirty seconds! Please keep the safety instructions in a safe place!
3. Please ensure that the voltage of the mains power supply corresponds to that stated on the type plate.
4. Only use a suitable extension cable when this is absolutely necessary! The use of an unsuitable extension cable carries with it the danger of fire or an electric shock! If an extension cable has to be used, ensure that it is correctly wired and in good condition!
5. Your machine is double insulated. This means that two completely independent types of insulation prevent you from coming into contact with live metal parts. This measure represents a high degree of protection against an electric shock.
6. When working with this machine it is advisable to use ear protection!

Before Initial Use

Mounting the Side Handle

During operation, keep one hand on the handle(4)and the other on the side handle(3). In order to mount the side handle, screw it into the screw hole of the gear box(10).

Correct Fitting of the Protective Device

Ensure that the protective cover (5) is fitted correctly and that the fixing screws have been tightened!

NOTE: During operation, Customer cannot tore down the protection cover

Cutting

In order to cut rods, tubes and metal parts you should use a cutting-off wheel for metal. When cutting stone material you should use a flat cutting off wheel for stone.

Always approach the job at the same angle at which you would like to cut. Maintain this angle during cutting and do not exert any side pressure on the wheel.

Polishing and sanding

Please proceed as follows when inserting the wheel:

1. Before mounting, remove the mains plug from the socket and release the safety switch(1)! Ensure that the protective device is correctly installed.
2. Keep lock button depressed, screw the polishing pad into drive shaft tightly
3. Cover polishing pad surface with wool bonnet for polishing or Attach sanding disc backing onto polishing pad surface for sanding

NOTE :Before polishing, adjust speed to keep it not more than 6000/min. This produces ideal results and avoids overloads. Insert in following contents above item "overload" on page 5.

Wire brushing

1. Remove external flange and internal flange from the drive shaft
2. Keep lock button depressed, screw the twist wire cup brush into drive shaft
3. tightly it as described above with the spanner II (16).

Overload

The motor of your machine may be damaged when overloaded.

This results from excessive working pressure over a prolonged period. Therefore you should not try to accelerate your working speed by increasing pressure on your machine.

Maintenance

- The protective cover, air slits and motor housing should be kept as free of dirt and dust as possible.
- Rub off the device with a clean cloth or use compressed air at a low pressure to blow out any dust or dirt. Excessive amounts of metal dust may result in electricity from the internal components being conducted on to exposed metal parts!
- Do not subject the machine to any overload! Overloading will lead to a reduction in the speed and performance and cause the machine to overheat! If this should happen, switch the machine off and let it cool down for approximately 30 minutes or to room temperature!

NOTE: Turning off the multi-function tool while it is being subjected to a load will reduce the working life of the operating switch!

Cleaning and Care

- Before cleaning the machine, remove the mains plug from the socket and release the safety switch (1)! The switch is to can't lockup the switch
- For cleaning purposes, only use a slightly damp but not wet cloth!
- Do not use any abrasive additives (petrol, turpentine etc) as these may damage the plastic housing!
- A mild soap is suitable for cleaning the machine!
- Ensure that no moisture is allowed to get inside the machine!

- After cleaning, wipe the machine with a dry cloth!

Technology data

Rated voltage	230V~
Rated frequency	50 Hz
Rated input	950W
Rated speed	3500-11000 min ⁻¹
Accessories	See the table II
Class of protection	II
Weight	2.5kg

The A-weighted sound pressure level of the power tool is typically 92dB(A).

During operation of the power tool the noise level may exceed 104dB(A).

The hand/arm vibration is typically less than 8.83m/s²

SAFETY INSTRUCTIONS

Warning! When using electric tools, basic safety precautions should always be followed to reduce the risk of fire, electric shock and personal injury, including the following. Read all these instructions before attempting to operate this product and save these instructions.

For safe operation:

- 01. Keep work area clean** - Cluttered areas and benches invite injuries.
- 02. Consider work area environment** - Don't expose power tools to rain. Don't use power tools in damp or wet locations. Keep work area well lit. Don't use power tools in presence of flammable liquids or gases.
- 03. Guard against electric shock** - Prevent body contact with earth surfaces (e.g. pipes, radiators, ranges refrigerators)
- 04. Keep children away** - Do not let visitors contact tool or extension cord. All visitors should be kept away from work area.
- 05. Store idle Tools** - When not in use, tools should be stored in dry, high, or locked-up place, out of the reach of children.
- 06. Don't force tool** - It will do the job better and safer at the rate for which it was intended.
- 07. Use the right tool** - Don't force small tools or attachments to do the job of heavy duty tool. Don't use tools for purposes not intended for example, don't use circular saw for cutting tree limbs or logs.
- 08. Dress properly** - Do not wear loose clothing or jewellery. They can be caught in moving parts. Rubber gloves and nonskid footwear are recommended when working outdoors. Wear protective hair covering to contain long hair.
- 09. Use safety glasses** - Also use face or dust mask if cutting operation is dusty.
- 10. Do not abuse the cord** - Never Carry tool by cord or yank it to disconnect it from receptacle, Keep cord from heat, oil and sharp edges.
- 11. Secure work** - Use clamps or a vice to hold work, it's safer than using your hand and it frees both hands to operate tool.
- 12. Do not overreach** - Keep proper footing and balance at all times.
- 13. Maintain tools with care** - Keep tools sharp and clean for better and safer performance. Follow instructions for lubricating and changing accessories. Inspect tool cords periodically and if damaged, have repaired by authorised service facility. Inspect extension cords periodically and replace if damaged. Keep handles dry, clean and free from oil and grease.
- 14. Disconnect tools** - When not in use, before servicing, and when changing accessories such as blades, bits and cutters.
- 15. Remove adjusting keys and wrenches** - Form the habit of checking to see that keys and adjusting wrenches are removed from tool before turning it on.
- 16. Avoid unintentional starting** - Don't Carry plugged-in tool with finger on switch. Be sure switch is off when plugging in.
- 17. Outdoor use extension cords** - When tool is used outdoors, use only extension cords intended for use outdoors and so marked.
- 18. Stay alert** - Watch what you are doing, Use common sense. Do not operate tool when you are tired.
- 19. Check damaged parts** - Before further use of the tool, a guard or other part that is damaged should be carefully checked to determine that it will operate properly and perform its intended function. Check for alignment of moving parts, binding of moving parts, breakage of parts, mounting, and any other conditions that may affect its operation.

- A guard or other part that is damaged should be properly repaired or replaced by an authorised service centre unless otherwise indicated elsewhere in this instruction manual. Have defective switches replaced by an authorised service centre. Do not use tool if switch does not turn it on and off.

- 20. Warning** - The use of any other accessory or attachment other than that recommended in this operating instruction might present a risk of personal injury.
- 21. Have your tool repaired by an expert** - This electric appliance is in accordance with the relevant safety rules. Only experts may carry out repairing of electric appliances otherwise it may cause considerable danger for the user.
- 22. connect the dust extraction device** - Wherever there are facilities for fitting a dust extraction system, make sure it is connected and used.
- 23. Noise level** - The noise level of this power tool is measured according to IEC 59 co 11, IEC 704, DIN 45635 Part 21, NFS 31081 (84/537IEWG). Noise level at work area can exceed 85 dB (A). In that case operators should protect themselves against damage to hearing - wear ear defenders.

WARNING:

**THIS PRODUCT OPERATES AT 230 VOLT AC SINGLE PHASE MAINS VOLTAGE.
READ ALL THE SAFETY INSTRUCTIONS BEFORE USING THE MACHINERY.
OBSERVE ALL THE LOCAL SAFETY REGULATIONS.**

This product is "CE" marked and complies with all the relevant European CE directives for LVD, EMC and Machinery safety.



UK PLUG REWIRING

Your appliance operates on 230-240V-50Hz AC Mains and comes fitted with a 5-pin BSI Approved plug, so that it is ready for use by simply plugging into AC Mains. Should you need to change or refit a plug, proceed as follows:

IMPORTANT:

The wires in the mains lead are coloured in accordance with the following code:

BLUE : NEUTRAL (N)

Brown or RED : LIVE (L)

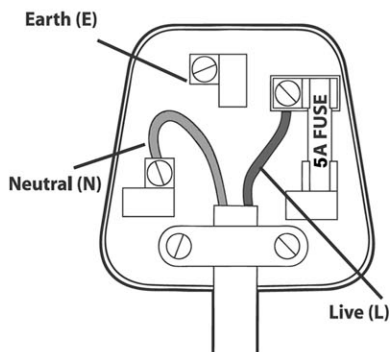
As the colours of the wires in the mains lead of this appliance may not correspond with the coloured markings identifying the terminals in you plug, proceed as follows:

The wire which is coloured BLUE must be connected to the terminal which is marked with the letter "N" or coloured BLACK.

The wire which is coloured BROWN must be connected to the terminal which is marked with the letter "L or coloured RED.

Always ensure that the Mains Cord is located into the Plug through the Cord Guard or Cable Clamp, and that the Cord Guard screws are tightened to clamp the Cord (outer sheath and inner coloured wires) in position in the Plug. Make sure the Plug top is also fitted securely.

This appliance must be protected by a 5-amp fuse in a 5-amp type (BS1363) plug. Should you need to replace the fuse, use only an ASTA approved BS 1362 fuse.





CORRECT DISPOSAL OF THIS PRODUCT

This marking indicates that this product should not be disposed with other household wastes throughout the EU. To prevent possible harm to the environment or human health from uncontrolled waste disposal, recycle it responsibly to promote the sustainable reuse of material resources. To return your used device, please use the return and collection systems or contact the retailer where the product was purchased. They can take this product for environmental safe recycling.

950W POLISHING MACHINE



MARKSMAN B20 3BT UK



MARKSMAN

67075c