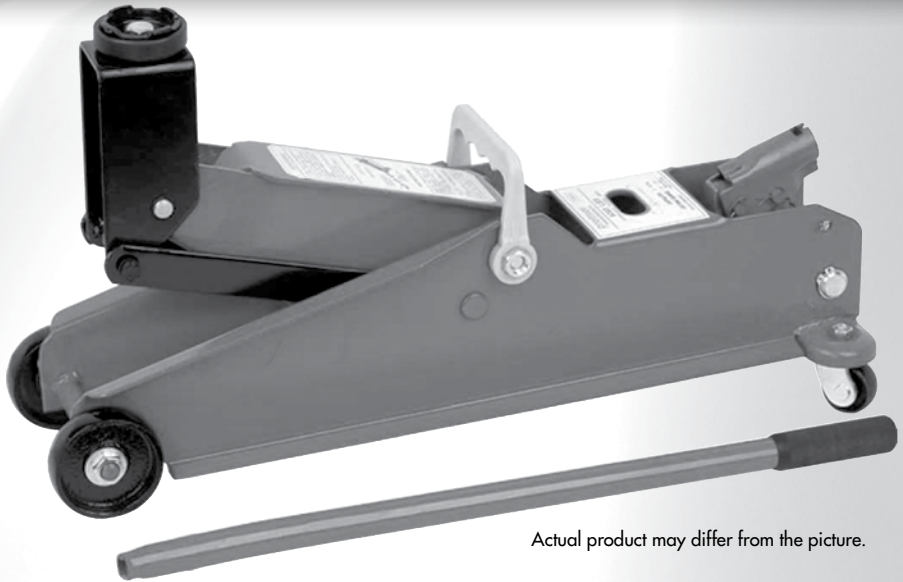


2T

66007R
ROADSTERTM
Car Accessories
Quality - that is streets ahead...

2 TONNE HYDRAULIC FLOOR JACK



Actual product may differ from the picture.

- Portable, carry case for easy storage
- Lifting range: 132mm to 325mm
- Lifting height is 195mm, has broad swivel saddle with safety lugs
- Long low, wide stance for stability
- Supplied with handle for height adjustment, raises and Positions



WARNING

Using Handtools can be dangerous. Always take care and keep away from children. Wear protection in work area at all times. Select correct type and size tool for the job in hand.



ROADSTER B20 3BT

Caution: Always use jack stands for support of lifted load. Never use hydraulic jack as the only means of load support.



WARNING:

THIS IS A LIFTING DEVICE ONLY: LOAD MUST BE SUPPORTED BY PROPER RATED CAPACITY JACK STANDS UNDER THE VEHICLE BEFORE STARTING INSPECTION OR WORK.

DO NOT OVERLOAD-JACK CAPACITY IS 2 TONS.

OVERLOADING CAN CAUSE DAMAGE TO JACK AND/OR FAILURE RESULTING IN PERSONAL INJURY OR PROPERTY DAMAGE.

THIS JACK IS DESIGNED FOR USE ON HARD LEVEL SURFACES USE ON OTHER THAN HARD SURFACES CAN RESULT IN JACK INSTABILITY AND POSSIBLE LOSS OF LOAD.

I. OPERATING INSTRUCTIONS

- a). Assemble handle front section to larger section using pin provided.
- b). When this jack leaves the factory for shipment. the vent plug on top of the oil chamber is closed to prevent the oil from being spilled. Also the oil chamber contains the right amount of oil before shipment; Before using for the first time. remove cover plate. unscrew vent plug until there is 1/16" gap. If oil spill is evident. or if vent plug was found open. it is necessary to check oil level before pumping. See instruction III. I-a.
- c). With release valve open. pump handle about 6 full strokes to assure complete distribution of oil.
- d). Close release valve. and jack is ready to use.
- e). Always centre the load on saddle of jack. Off- centre loads and loads lifted while jack is not sitting level may damage the jack.

II. GENERAL CARE OF YOUR JACK

When jack is not in use lifting arm and pump lever should be in full down position. This will protect precision machined surfaces of the ram and the piston from corrosion.

Container is filled with 7fl.oz.of hydraulic jack oil.

Keep your jack clean and well lubricated as well as the outside moving parts such as the lifting arm spindle, wheel bearings and cross head pin.

Should any other parts be required, please refer to the sectional drawings and quote appropriate serial number of the jack when ordering.

III. HOW TO LOCATE AND REMEDY TROUBLE

1. If jack Will Not Raise or Lift Load

- a). Before attempting to locate the specific trouble. inspect oil level in the following manner Place jack on level position Open release valve Correct oil level is at bottom of thread inside oil chamber when lifting arm is at full down position If lacking oil remove vent plug located under cover plate Fill with oil to correct level and install and tighten the plug.

Close release valve and pull lifting arm up to its full height. Then open release valve and, by stepping on saddle force it to lower as rapidly as possible. Repeat this operation three or four times. This procedure will thoroughly flush the valves and assure complete distribution of oil. In most cases it will restore the jack to proper working order. Close release valve tightly Try jack under load.

- b). The jack may have air trapped in the system: Open release valve. Pump handle 6 full strokes.

Close release valve and try jack again.

- c). O- ring seal for pump may be worn: This will happen only after months of service. A new O- ring seal or a complete new piston can be purchased and easily installed.
- d). Release valve may be held open by dirt on seat. Flush by pulling lifting arm up and down several times while release valve is open. If necessary the release valve may be removed for cleaning the valve and valve seat.

2. If Jack Lowers Under Load

- a). The discharge valve may be held open by dirt on ball seat: When a dirty discharge valve or ball seat exists, the jack may lower quickly. causing handle to fly back with force. This is caused by the oil rushing back into the pump chamber through the open ball seat. When this happens, it is advisable to repeat procedure I-a before going through the partial disassembly of the hydraulic unit. The discharge valve is located at the bottom of ram cylinder there is a screen washer. This must be removed carefully and if damaged a new one must be fitted. Now remove the discharge valve ball and clean valve seat. Wipe ball and replace and reseal. Use $\frac{1}{2}$ " diameter x 3" long punch and small hammer. Place the punch on top of ball and give the punch a light tap with a small hammer. This will have the effect of reseating the ball on its seat. Install the screen washer. Screw in ram cylinder tightly. Replace washers top and bottom of oil chamber, install ram assembly and screw in top nut.

- b). Cup seal for the ram may be worn :This is likely only in jacks that have given very heavy Service Follow above procedure 2- a until access to ram assembly is made. Remove worn seal by pulling away or cutting with a small knife. Take caution not to damage the new ram seal when installing.
- c). Dirt in the release valve will cause jack to lower under load. Remove release valve. clean valve seat, replace valve.

3. If Jack Will Not Lower Completely When Raised

- a). Return spring for lifting arm may be broken or un hooked Replace return spring.
- b). It probably needs imbrication Clean and oil all moving parts in the lifting arm mechanism. c) Hydraulic unit may contain too much oil and vent valve may be closed. Open vent plug.

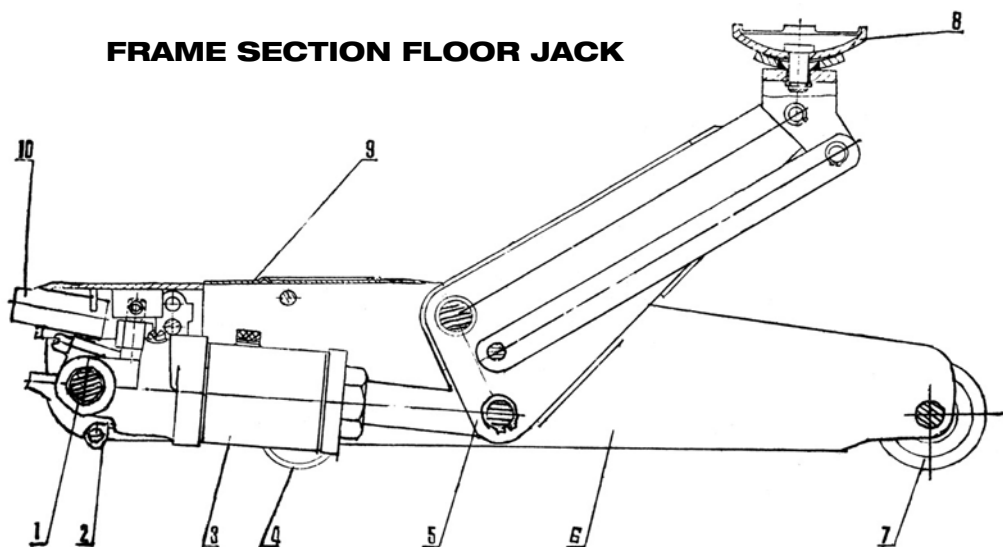
4. If Jack Will Not Lift Full 2 tons Capacity CHECK THE FOLLOWING:

- a). The O-ring seal for piston pump may be worn. See instructions III.I -c.
- b). The unit may have air trapped in the system. See instructions III.I -b.
- c). The overload valve is factory adjusted for the jack to lift 2 tons load and should not be altered. Examine jack for binding. causing loss of load.

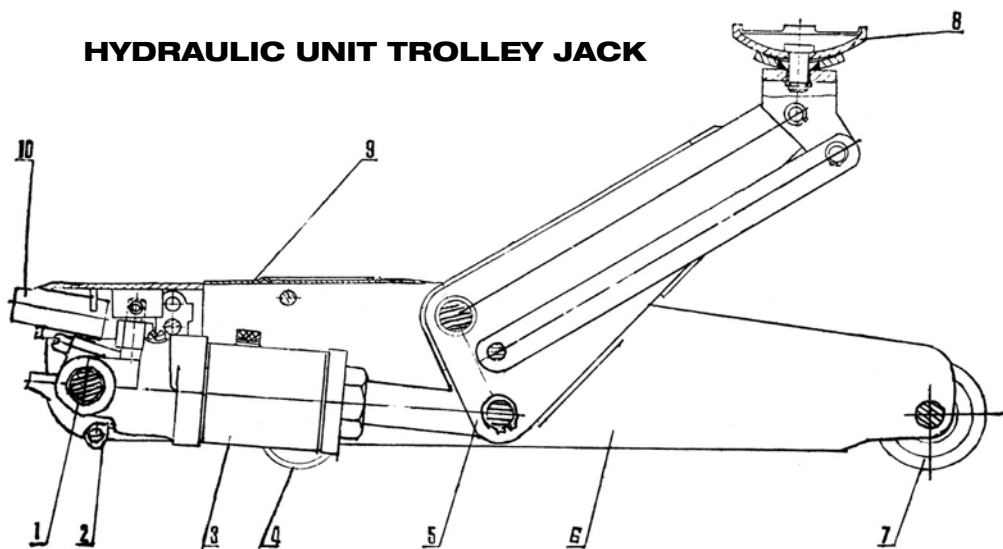
Part List

ITEM NUMBER	PART NUMBER	DESCRIPTION	QUANTITY REQUIRED
1	0001	Spindle	2
2	0005	Spring Tension	1
3	3000	Hydraulic Unit Assembly	1
4	5002	Caster Wheel	2
5	4000	Lifting Arm Assembly	1
6	1000	Side Member Assembly RH	1
	2000	LH	1
7	0011	Front wheel	2
8	7201	Saddle	1
9	0006	Cover Plate	1
10	6000	Handle Base Assembly	1

FRAME SECTION FLOOR JACK



HYDRAULIC UNIT TROLLEY JACK



ITEM No.	PART No.	DESCRIPTION	QUANTITY REQUIRED
11	3001	Body Hydraulic Unit	1
12	3100	Screen Washer Pump	1
13	0308	Steel Ball Suction Valve. ~4	1
14	0308	Steel Ball Discharge Valve. ,3?	1
15	3301	Ram	1
16	3025	O-ring Seal	1
17	3012	Top Nut	1
18	3014	Seal Washer Oil Chamber	2
19	3400	Oil Chamber	1
20	3023	O-ring Seal	1
21	3011	Vent Plug	1
22	3013	Cylinder.Ram	1
23	3303	Cup Seal Ram	1
24	3304	O-ring Cup Seal	1
25	3500	Screen Washer	1
26	3201	Piston	1
27	3027	J-ing Seal	1
28	3003	Cylinder Pump.	1
29	3202	Wiper Pitson	1
30	3203	O-ring Seat. Piston	1
31	3019	O-ring Seal Overload Valve	1
32	3020	Overload Valve Screw	1
33	0308	Steel Ball Overload Valve ,36	1
34	0308	Steel Ball Release Valve ,66	1
35	3022	O-ring Seal Release Valve	1
36	3015	Release Valve Screw	

66007R

ROADSTER
Car Accessories

Quality - that's streets ahead...

2 TONNE HYDRAULIC FLOOR JACK



WARNING

Using Handtools can be dangerous. Always take care and keep away from children. Wear protection in work area at all times. Select correct type and size tool for the job in hand.



5 038673 660073

ROADSTER B20 3BT

