

INSTRUCTION MANUAL

31344c
elpine[®]
A NAME YOU CAN TRUST!

BLENDER WITH GRINDER

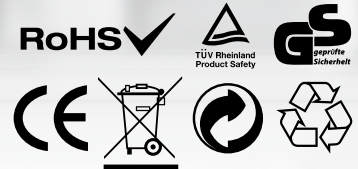


**500
WATTS**

**AUTO
CLEAN**

1.5LTR

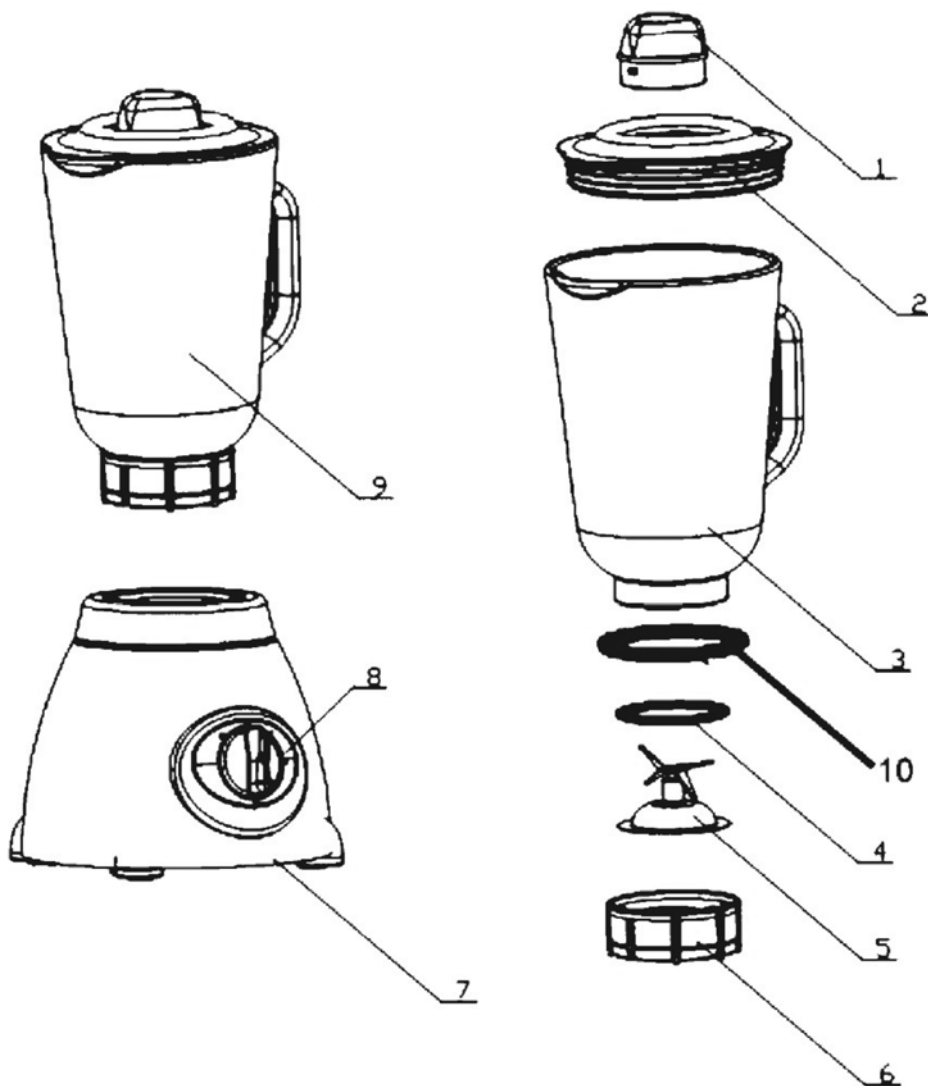
- Power: 500w • 2 Speed
- Capacity: 1.5ltr
- Easy cleaning
- Locking slot
- Auto Clean button
- Pulse button
- Stainless steel blades



Elpine B20 3BT UK



BEFORE OPERATING THIS UNIT, PLEASE READ THESE INSTRUCTIONS COMPLETELY



FEATURES

- 01). Inner cover
- 02). Lid
- 03). Glass jar
- 04). Sealing ring
- 05). Cutting blade
- 06). Cup base
- 07). Motor block
- 08). Rotary switch
- 09). Jug
- 10). Ring

TECHNICAL INFORMATION

Voltage/frequency: 230V 50Hz(500W)

Glass jar capacity: 1.5L

IMPORTANT SAFEGUARDS

When using electrical appliance, basic safety precaution should always be followed including the following:

1. Read all instructions before using.
2. To protect against risk of electrical shock do not put the unit in water or other liquid.
3. Close supervision is necessary when any appliance is used near children.
4. Unplug from electrical socket when not in use, and before any removal of parts, and before cleaning.
5. Avoid contact with any moving parts.
6. This appliance has a polarized plug. To reduce the risk of electric shock, this plug will be fit in a polarized outlet only one way. If the plug does not fit fully in the outlet, reverse the plug. If it still does not fit, contact a qualified electrician. Do not modify the plug in any way.
7. Do not operate any appliance with a damaged cord or plug, or after if the appliance Malfunctions.

All repairs must be carried out by an Electrically Qualified Person.

8. Only use attachments that are supplied with this appliance.
9. Do not use outdoors.
10. Do not let cord hang over edge of a table or counter.
11. Keep hands and utensils out of container while blending. The scraper may be used but only when the blender is not running.
12. Blades are sharp. handle with care.
13. To reduce the risk of injury, never place cutter-assembly blades on base without jar properly attached.
14. Always make sure the cover is securely locked in place before operating appliance.
15. Always operate blender with cover in place.
16. When blending hot liquids, remove center piece of two-piece cover.
17. Don't switch on the appliance without any food or water.
18. Only use appliance for its intended use.

SAVE THESE INSTRUCTIONS

BEFORE FIRST USE

- All parts of the blender are to be thoroughly cleaned before being used for the first time.(see Section: Cleaning).
- Take out the required length of cable from the cable tidy on the base of the blender and connect the device to the mains supply.

ASSEMBLY OF THE GLASS JAR

1. PUT THE RUBBER SEALING (4) ON THE INNER EDGE OF THE BLADE UNIT (5).
2. PUT THE BLADE UNIT WITH SEALING RING AND RING (10) INTO THE CUP BASE (6).
3. MOUNT THE GLASS JAR (3) ONTO THE CUP BASE AND SECURE IN PLACE BY TURNING IN A CLOCKWISE DIRECTION UNIT IT IS FIXED TOGETHER.
4. MOUNT THE CUP WITH CUP UNIT ONTO THE BASE UNIT.
5. AFTER PUTTING THE INGREDIENTS IN THE CUP FIT THE LID (2) ONTO THE CUP BY PRESSING DOWN.
6. INSERT THE INNER COVER (1) INTO THE OPENING OF THE LID, AND TURN IT IN ANTICLOCKWISE DIRECTION UNIT IT IS LOCKED IN PLACE..
7. PUT THE BLADE UNIT WITH SEALING RING INTO THE CUP BASE (6).
8. MOUNT THE GLASS JAR (3) ONTO THE CUP BASE UNIT AND TUNE THE CUP BASE UNIT, AND TUNE THE CUP BASE UNIT IN CLOCKWISE DIRECTION UNIT IT IS FIXED.
9. MOUNT THE CUP WITH CUP UNIT ONTO THE BASE UNIT.
10. AFTER PUTTING THE INGREDIENTS IN THE CUP, FIX THE LID (2) ONTO THE CUP BY PRESSING DOWN.
11. INSERT THE INNER COVER (1) INTO THE OPENING OF THE LID, AND TURN IT IN ANTICLOCKWISE DIRECTION UNTIL IT IS LOCKED.

INSERTING THE GLASS JAR

1. Make sure that the blender is switched off (Switch in the '0' setting).
2. Place the jug (9) on to the motor block (7) and press down until securely engaged.

USE

1. Place the foodstuff you wish to process into the glass jar.
2. Put the lid on the glass jar and close securely. Place the measuring cap into the hole in the lid and turn clockwise to lock.
3. Switch on the motor block:

Speed setting 1 : Use for light usage with liquids

Speed setting 2 : Use for more solid consistency - for mixing liquids and solid foodstuffs

M setting : for ice crushing & short, powerful impulse movements (The switch does not permanently engage in the 'M' setting. You have to hold the switch in the 'M' setting or turn it repeatedly into the 'M' setting)

After using the blender, always move the switch into the '0' setting and pull out the mains plug.

To remove the glass jar just lift it up. You do not have to rotate the glass jar to remove it.

USEFUL TIPS

- To achieve the best results when pureeing solid ingredients, place small portions into the glass jar one by one instead of placing a large quantity all at once.
- If you are processing solid ingredients cut them into small pieces (2-3cm) first.
- When mixing solid ingredients start off first with a small amount of liquid, then gradually add more and more liquid through the opening in the lid.
- Always place your hand on top of the blender when you are operating the device.
- Be careful when processing hot liquids.
- For stirring solid or very thick liquid ingredients we recommend that you use the blender in impulse mode to prevent the blades from becoming stuck.

MOTOR BLOCK

Never immerse the motor block in water. Wipe with a moist cloth only.

SIMPLE CLEANING/ RINSING OUT THE ASSEMBLED GLASS JAR

Empty the glass jar and fill it with water. Place on the motor block and turn the switch several times into the 'M' setting. Empty the glass jar and rinse until clean.

Thorough cleaning of the dismantled glass jar

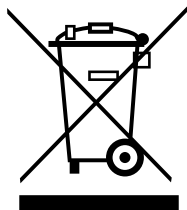
Ensure that the glass jar is completely empty before you unscrew the retaining ring.

Be careful when handling the cutting blade. All removable parts are suitable for the dishwasher. We reserve the right to make amendments.

WARNINGS:

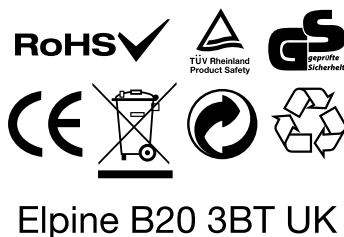
1. This appliance is not intended for prolonged operation.
2. This appliance must not operate when there's nothing in the jar.
3. Do not touch the blade when appliance in service.
4. This appliance is not intended for use by persons(including children) with reduced physical, sensory or mental capabilities, or lack of experience and knowledge, unless they have been given supervision or instruction concerning use of the appliance by a person responsible for their safety. Children should be supervised to ensure that they do not play with the appliance.
5. The appliance should be repaired by electrically qualified professionals.
6. Switch off the appliance and disconnect from supply before changing accessories or approaching parts that move in use.

CORRECT DISPOSAL OF THIS PRODUCT



This marking indicates that this product should not be disposed with other household wastes throughout the EU. To prevent possible harm to the environment or human health from uncontrolled waste disposal, recycle it responsibly to promote the sustainable reuse of material resources. To return your used device, please use the return and collection systems or contact the retailer where the product was purchased. They can take this product for environmental safe recycling.

31344c
elpine[®]
A NAME YOU CAN TRUST!



Elpine B20 3BT UK



BLENDER WITH GRINDER

UK PLUG REWIRING

Your appliance operates on 220-240V-50Hz AC Mains and comes fitted with a 3-pin BSI Approved plug, so that it is ready for use by simply plugging into AC Mains. Should you need to change or refit a plug, proceed as follows:

IMPORTANT:

The wires in the mains lead are coloured in accordance with the following code:

BLUE : NEUTRAL (N)

BROWN : LIVE (L)

GREEN & YELLOW : EARTH (E)

As the colours of the wires in the mains lead of this appliance may not correspond with the coloured markings identifying the terminals in your plug, proceed as follows:

The wire which is coloured BLUE must be connected to the terminal which is marked with the letter "N" or coloured BLACK.

The wire which is coloured BROWN must be connected to the terminal which is marked with the letter "L" or coloured RED.

The wire which is coloured GREEN & YELLOW must be connected to the terminal which is marked with the letter "E" or  or coloured GREEN.

Always ensure that the Mains Cord is located into the Plug through the Cord Guard or Cable Clamp, and that the Cord Guard screws are tightened to clamp the Cord (outer sheath and inner coloured wires) in position in the Plug. Make sure the Plug top is also fitted securely.

This appliance must be protected by a 13-amp fuse in a 13-amp type (BS1363) plug. Should you need to replace the fuse, use only an ASTA approved BS 1362 fuse.

