

INSTRUCTION MANUAL

67073c

Read all the instruction carefully before you use the appliance and keep it for future use.



MARKSMAN
QUALITY TOOLS

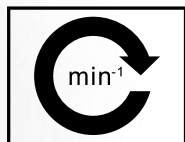
24V CORDLESS IMPACT WRENCH



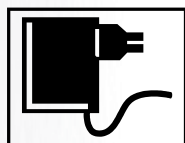
- SOFT GRIP
- 1 HOUR FAST CHARGE
- 4PCS SOCKETS
17/19/21/23MM
- RECHARGEABLE BATTERY
- BATTERY CHARGE
- CARRY CASE



2X24V

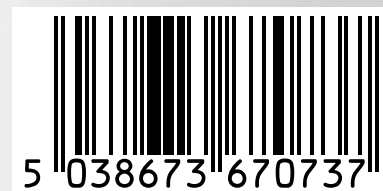


0-2000 min⁻¹



1 HOUR

RoHS ✓ **CE**



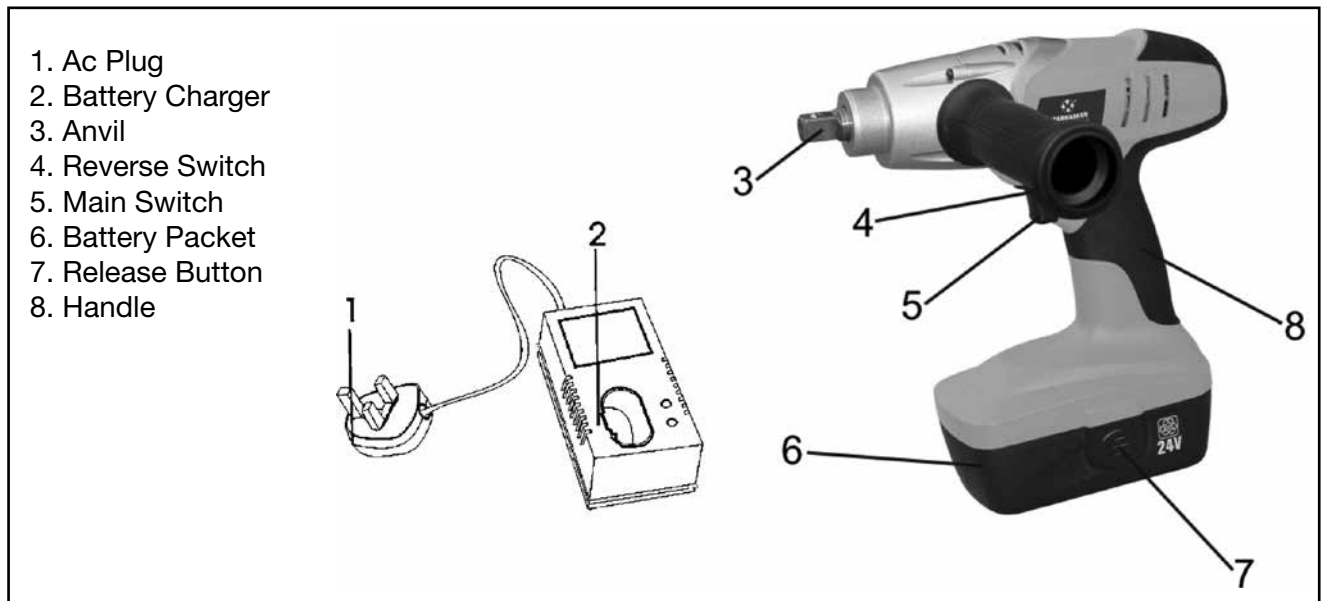
5 038673 670737

MARKSMAN B20 3BT UK

IMPORTANT SAFEGUARDS

Please read these operating instructions before using the tool for the first time and keep them with the tool at all times. Failure to follow all instructions listed below, may result in electric shock, fire and/or serious personal injury. **SAVE THESE INSTRUCTIONS.**

FUNCTIONAL DESCRIPTION



Technical Data		67073c
Voltage		DC 24v
Max. Torque		180 ft.lbs
No-load speed:		0-2000/min
Normal Charge Process	Battery	JDB 240R
	Charger	JDA-240KA - JDA240KB
	Charging Time	1 Hour

General Safety Instructions for Battery Operated Tools

Work Area

Keep your work area clean and well lit. Cluttered benches and dark areas invite accidents.

Do not operate power tools in explosive atmospheres, such as in the presence of flammable liquids, gasses, or dust. Power tools create sparks which may ignite the dust or fumes.

Keep bystanders, children, and visitors away while operating a power tool.

Distractions can cause you to lose control.

Electrical Safety

Do not abuse the cord. Never use the cord to carry the tool. Keep cord away from heat, oil, sharp edges, or moving parts. Replace damaged cords immediately.

Damaged cords may create a fire.

A battery operated tool with integral batteries or a separate battery pack must be recharged only with the specified charger for the battery. A charger that may be suitable for one type of battery may create a risk of fire when used with another battery.

Use battery operated tool only with specifically designated battery pack. Use of any other batteries may create a risk of fire.

Personal Safety

Stay alert, watch what you are doing, and use common sense when operating a power tool. Do not use tool while tired or under the influence of drugs, alcohol, or medication. A moment of inattention while operating power tools may result in serious personal injury.

Dress properly. Do not wear loose clothing or jewellery. Contain long hair. Keep your hair, clothing, and gloves away from moving parts. Loose clothes, jewellery, or long hair can be caught in moving parts.

Avoid accidental starting. Be sure switch is in the locked or off position before inserting battery pack. Carrying tools with your finger on the switch or inserting the battery pack into a tool with the switch on invites accidents.

Remove adjusting keys or wrenches before turning the tool on. A wrench or a key that is left attached to a rotating part of the tool may result in personal injury.

Do not overreach. Keep proper footing and balance at all times. Proper footing and balance enable better control of the tool in unexpected situations.

Use safety equipment. Always wear eye protection. Dust mask, non-skid safety shoes, hard hat and hearing protection must be used for appropriate conditions.

Tool Use and Care

Use clamps or other practical way to secure and support the work-piece to a stable platform. Holding the work by hand or against your body is unstable and may lead to loss of control.

Do not force tool. Use the correct tool for your application. The correct tool will do the job better and safer at the rate for which it is designed.

Do not use tool if switch does not turn it on or off. A tool that cannot be controlled with the switch is dangerous and must be repaired.

Disconnect battery pack from tool or place the switch in the locked or off position before making any adjustments, changing accessories, or storing the tool. Such preventive safety measures reduce the risk of starting the tool accidentally.

Store idle tools out of reach of children and other untrained persons. Tools are dangerous in the hands of untrained users.

When battery pack is not in use, keep it away from other metal objects like: paper clips, coins, keys, nails, screws, or other small metal objects that can make a connection from one terminal to another. Shorting the battery terminals together may cause sparks, burns, or a fire.

Maintain tools with care. Keep cutting tools sharp and clean. Properly maintained tools with sharp cutting edge are less likely to bind and are easier to control.

Check for misalignment or binding of moving parts, breakage of parts, and any other condition that may affect the tool's operation. If damaged, have the tool serviced before using. Many accidents are caused by poorly maintained tools.

Use only accessories that are recommended by the manufacturer for your model. Accessories that may be suitable for one tool may create a risk of injury when used on another tool.

Service

Tool service must be performed only by qualified repair personnel. Service or maintenance performed by unqualified personnel may result in a risk of injury.

When servicing a tool. Use only identical replacement parts. Follow instructions in the Maintenance section of this manual. Use of unauthorized parts or failure to follow Maintenance instructions may create a risk of shock or injury.

SPECIFIC SAFETY RULE

Hold tool by insulated gripping surfaces when performing an operation where the cutting tool may contact hidden wiring. Contact with a “live” wire will also make exposed metal parts of the tool “live” and shock the operator.

OPERATION

KNOW YOUR CORDLESS IMPACT WRENCH

Before attempting to use any tool familiarise yourself with all operating features and safety requirements.

WARNING: Do not allow familiarity with tools to make you careless. Remember that a careless distraction of a second is sufficient to inflict severe injury.

CHARGING YOUR CORDLESS IMPACT WRENCH

The battery pack for this tool has been shipped in a low charge condition to prevent possible problems. Therefore, you should charge it prior to use.

Note: Batteries will not reach full charge the first time they are charged. Allow several cycles (drilling followed by recharging) for them to fully charge.

CHARGING:

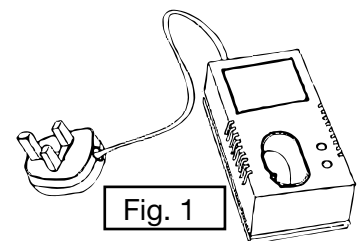
Your battery can be charged in 1 hour charger. Be sure to read all safety instructions before using your charger. This product is not user serviceable. There are no user serviceable parts inside the charger. Servicing at an authorised service centre is required to avoid damage to static sensitive internal components.

Read all of the instructions in the battery charger section to this manual before attempting to charge the battery pack for your tool. Always use correct battery pack (pack supplied with tool or replacement pack exactly like it.). Never install any other battery pack, it will ruin your tool and may create hazardous condition.

• Charging procedure

These chargers require no adjustment and are designed to be as easy as possible to operate. Simply place your battery packs into the receptacle of a plugged in charger and it will automatically charge the pack.

1. Plug the charger into an appropriate AC power outlet.
2. Insert the battery pack into the charger, as shown in FIG1, making sure the pack is fully seated in the charger. The red LED lights to tell you that the battery pack is on charge.
3. The battery pack will be fully charged in about 1 hour. When the green LED lights, the charging is completed. The pack is fully charged and may be used at this time or left in the charger.



• Important charging notes.

Longest life and best performance can be obtained if the battery pack is charged when the air temperature is between 65° - 75° (18-24° C). Do not charge the battery pack in an air temperature below +40° F (+4.5° C), or above +105° F (+40.5° C). This is important and will prevent serious damage to the battery pack.

1. The charger and battery pack may become warm to touch while charging. This is a normal condition, and does not indicate a problem.
2. If the battery pack does not charge properly:
 - (1) check current at receptacle by plugging in a lamp or other appliance.
 - (2) check to see if receptacle is connected to a light switch which turns power off when you turn out the light.

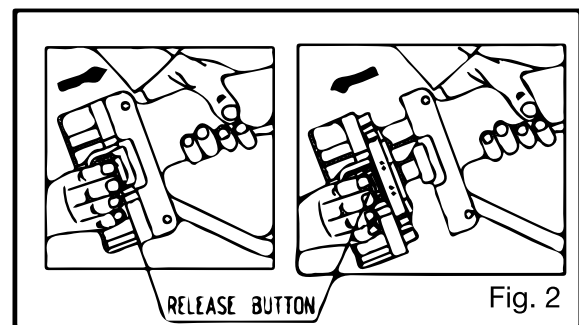
- (3) move charger and battery pack to a location where the surrounding air temperature is approximately 65°-75° F (18-24° C).
- (4) if charging problems persist, take or send the tool, battery pack and charger to your local service center.
3. The battery pack should be recharged when it fails to produce sufficient power on jobs which were easily done previously. **DO NOT CONTINUE** to use under these conditions. Follow the charging procedure. You may also charge a partially used pack whenever you desire with no adverse affect on the battery pack.
4. Under certain conditions, with the charger plugged in to the power supply, the exposed charging contacts inside the charger can be shorted by foreign material. Foreign materials of a conductive nature such as, but no limited to, steel wool, aluminum foil, or any buildup of metallic particles should be kept away from charger cavities. Always unplug the charger from the power supply when there is no battery pack in the cavity. Unplug charger before attempting to clean.
5. Do not immerse charger in water or any other liquid.
6. **WARNING:** don't allow any liquid to get inside charger. Electric shock may result. To facilitate the cooling of the battery pack after use, avoid placing the charger or battery pack in a warm environment such as in a metal shed, or an uninsulated trailer.
7. **CAUTION:** never attempt to open the battery pack for any reason. If the plastic housing of the battery pack breaks or cracks, return to a service center for recycling.

NOTE:

- The battery charger is for charging this-battery pack, Never use it for other purposes or for other manufacturer's batteries.

TO INSTALL BATTERY PACK

- Place the direction of rotation selector in center position.
- To install the battery pack into the tool handle, align the base of the tool with the notch inside
- the tool's handle and slide the battery pack firmly into the handle until you hear the lock snap into place as shown in FIG 2.



TO REMOVE BATTERY PACK

- Place the direction of rotation selector in center position.
- Press the release buttons and firmly pull the battery pack out of the tool handle

CAUTION: When placing battery pack in your cordless impact wrench, be sure raised rib on battery pack aligns with groove in wrench's battery port and latches snap in place properly. Improper assembly of battery pack can cause damage to internal components.

BATTERIES

Your wrench's battery pack is equipped with Nickel-Cadmium rechargeable batteries. Length of service from each charging will depend on the type of work you are doing.

The batteries in this tool have been designed to provide maximum trouble-free life. However, like all batteries, they will eventually wear out. Do not disassemble the battery pack and attempt to replace the batteries. Handling of these batteries, especially when wearing rings and jewelry could result in a serious burn.

To obtain the longest possible battery life, we suggest the following:

- Store and charge your batteries in a cool area. Temperatures above normal room temperature will shorten battery life.

- Never store batteries in a discharged condition. Wait for battery to cool and charge immediately.
- All batteries gradually lose their charge. The higher temperature, the quicker they lose their charge. If you store your tool for long periods of time without using recharge the batteries every month or two. This practice will prolong battery life.

CAUTION:

Once the batteries become fully charged, we recommend that you unplug the charger from power supply and remove from battery pack.

SWITCH ACTION CAUTION

Before inserting the battery pack into the tool, always check to see that the switch trigger actuates properly and returns to the "OFF" position when released.

To start the tool, simply pull the trigger tool speed is increased by increasing pressure on the trigger. Release the trigger to stop.

REVERSING SWITCH ACTION CAUTION

- Always check the direction of the rotation before operation
- Use the reversing switch only after the tool comes to a complete stop. Changing the direction of rotation before the tool stops may damage the tool.
- When not operating the tool, always set the reversing switch lever to the neutral position

This tool has a reversing switch to change the direction of rotation. Depress the reversing switch lever from the A side for counterclockwise rotation. When the switch lever is in the neutral position, the switch trigger cannot be pulled.

CAUTION: Do not change the direction of rotation while the tool is running, The tool may be damaged.

ASSEMBLY

Selecting correct socket

Always use the correct size socket for bolts and nuts. An incorrect size socket will result in inaccurate and inconsistent fastening torque and or damage to the bolt or nut. Refer to accessories section for socket size

Installing or removing socket

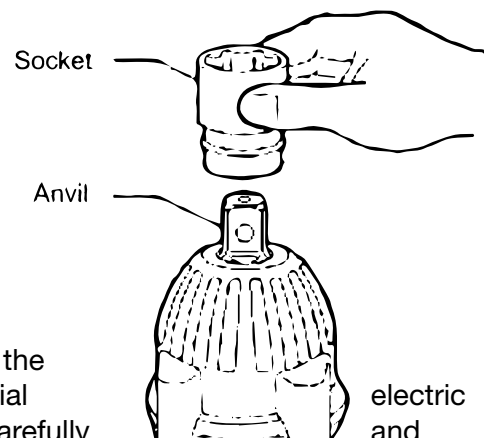
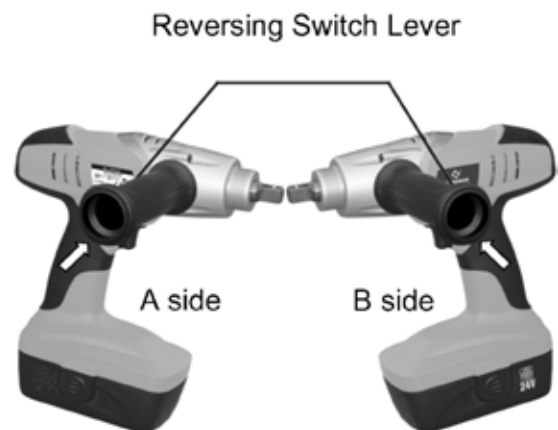
Always be sure that the tool is switched off and the battery pack is removed before installing or removing the socket.

To install the socket, push it onto the anvil of the tool until it locks into place. To remove the socket, simply pull it off.

General Safety Instructions

Warning: When using power tools, attention must be paid to the following basic safety measures as a protection against potential shock and risk of injuries and burns. Read these instructions carefully observe them when using this tool.

01. Keep working area tidy. Disorder in the working area increases the risk of accidents.



02. Take account of surrounding influences. Never expose power tools to rain or moisture. Do not use it in moist or wet environments. Ensure good lighting in the working area. Do not use it in the vicinity of combustible liquid or gases.
03. Protect yourself from electric shocks. Avoid bodily contact with metal pipes, radiators, stoves etc.
04. Do not overload your tool. It will work reliably better if used in the specified performance range.
05. Use the correct tool for the job. Do not use any tools or attachments that are too weak for the job. Do not use it for the work for which it is not intended.
06. Wear appropriate working clothes. Do not wear any loose clothing or jewellery that could catch in the moving parts. If you have long hair, wear hairnet.
07. Use safety glasses, and breathing mask when performing any work that generates dust and ear defenders for noise.
08. Secure the work piece. Use clamping devices or a vice in order to hold the work piece firmly. Thus you can operate the machine with two hands.
09. Do not overstretch beyond your standing area. Avoid any abnormal posture. Ensure that you are standing securely and keep your balances at all the times.
10. Look after your tools with care. Keep your tools ready for operation (e.g. sharp) and clean to work well and safely. Carry out the maintenance checks regularly. Any damage or repairs must be carried out by an electrical specialist. Always keep the handles dry and free from any grease.
11. Pull the mains plug out. When not in use, prior to maintenance and during the tool change, disconnect the plug from the mains socket.
12. Do not leave the tool with keys left inserted. Before switching it on, check that the keys and setting tools have been removed.
13. Avoid any accidental operation. Do not place your finger on the switch when carrying the tool live. { i.e plugged in the mains socket} Ensure the tool is off before connecting it to the mains socket.
14. Extension cables for outdoors. Use only those extension cables, which have been approved for this purposes and are marked accordingly.
15. Always pay attention. Plan your work. Proceed sensibly. Do not use the tool if you are lacking in concentration.
16. Repairs by qualified person only. This power tool complies with all the relevant electrical safety regulations. Only qualified electricians may carry out the repairs.
17. Use of accessories. For your own safety, use only accessories that are specified in the operating instructions or recommended by the tool manufacturer. Any tool, inserts, accessories other than those recommended in the instructions may cause a potential shock or injury to the user.
18. Keep your tools away from children. Store your power tools in a safe place where children cannot have access.

There is no user serviceable parts inside except those referred to in the manual. Always refer servicing to an authorised dealer. Never remove any part of the casing unless qualified to do so.; this unit contains dangerous voltages.

WARNING:

For your protection, if this tool is to be used outdoors, do not expose it to rain or use in damp locations. Do not place the tool on a damp surface, use a workbench if available. For added protection use a suitable power circuit breaker at the socket outlet. Be sure to use a suitable extension cable which has an Earth core and which is in good condition. Do not use an extension specifically designed for double insulated products.

UK PLUG REWIRING

Your appliance operates on 230-240V-50Hz AC Mains and comes fitted with a 3-pin BSI Approved plug, so that it is ready for use by simply plugging into AC Mains. Should you need to change or refit a plug, proceed as follows:

IMPORTANT:

The wires in the mains lead are coloured in accordance with the following code:

BLUE : NEUTRAL (N)

Brown or RED : LIVE (L)

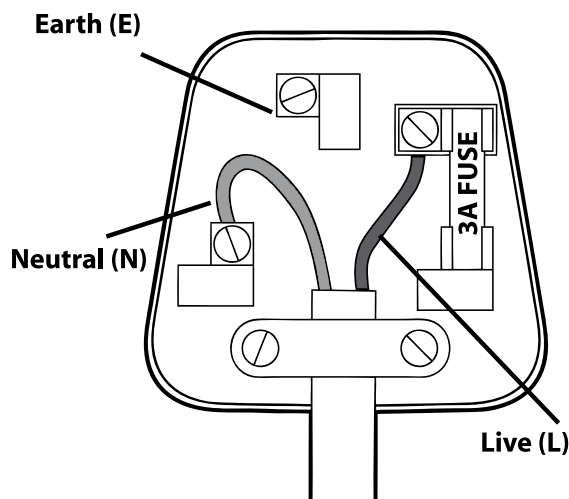
As the colours of the wires in the mains lead of this appliance may not correspond with the coloured markings identifying the terminals in you plug, proceed as follows:

The wire which is coloured **BLUE** must be connected to the terminal which is marked with the letter "N" or coloured **BLACK**.

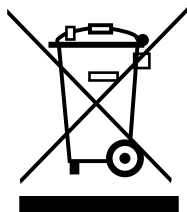
The wire which is coloured **BROWN** must be connected to the terminal which is marked with the letter "L" or coloured **RED**.

Always ensure that the Mains Cord is located into the Plug through the Cord Guard or Cable Clamp, and that the Cord Guard screws are lightened to clamp the Cord (outer sheath and inner coloured wires) in position in the Plug. Make sure the Plug top is also fitted securely.

This appliance must be protected by a 3-amp fuse in a 3-amp type (BS1363) plug. Should you need to replace the fuse, use only an ASTA approved BS 1362 fuse.



CORRECT DISPOSAL OF THIS PRODUCT



This marking indicates that this product should not be disposed with other household wastes throughout the EU. To prevent possible harm to the environment or human health from uncontrolled waste disposal, recycle it responsibly to promote the sustainable reuse of material resources. To return your used device, please use the return and collection systems or contact the retailer where the product was purchased. They can take this product for environmental safe recycling.

24V CORDLESS IMPACT WRENCH

RoHS ✓

CE



MARKSMAN B20 3BT UK

67073c



MARKSMAN
QUALITY TOOLS