

INSTRUCTION MANUAL

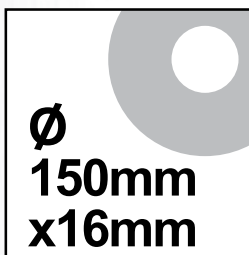
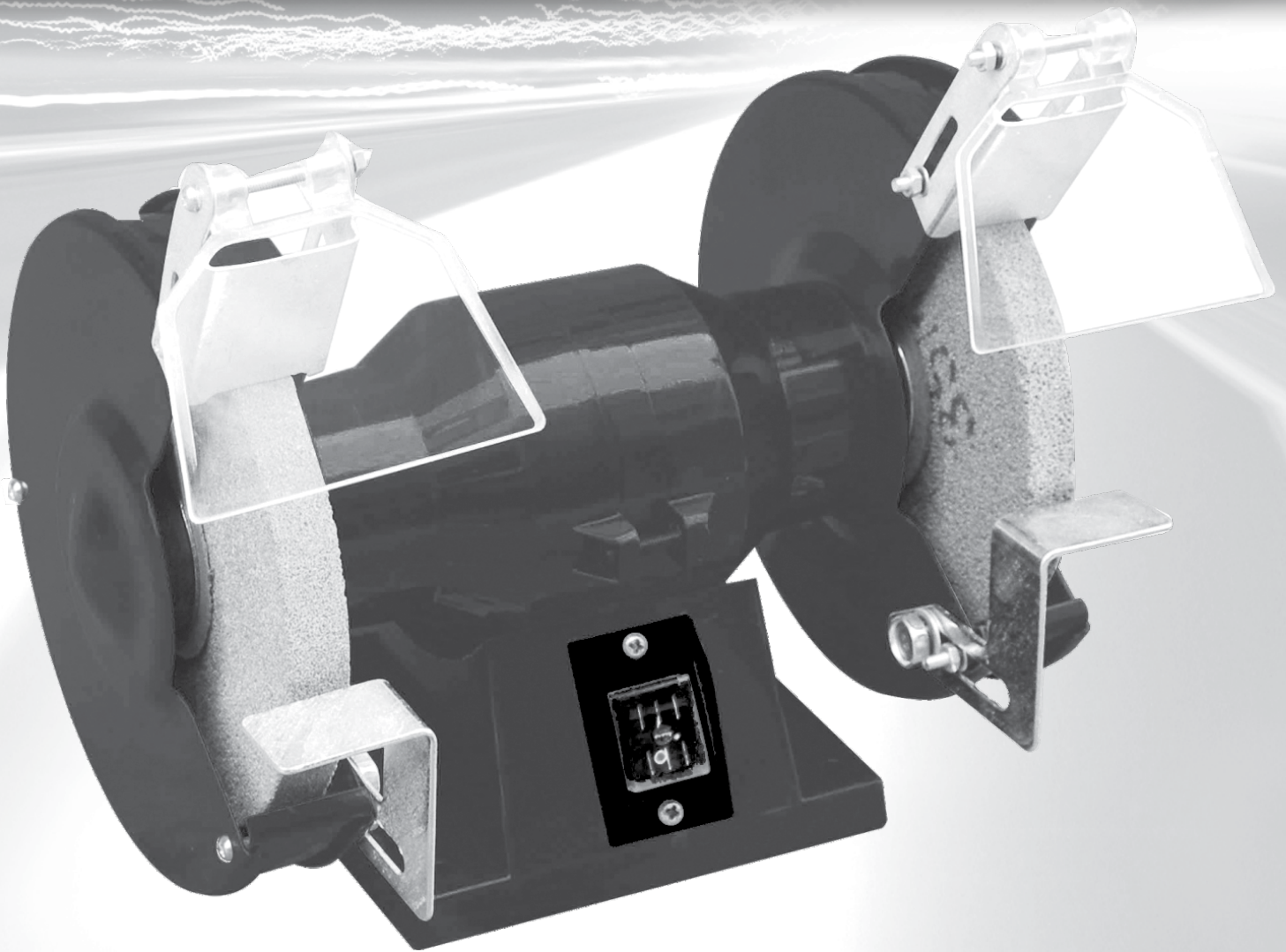
67012c

Read all the instruction carefully before you use
the appliance and keep it for future use.



MARKSMAN
QUALITY TOOLS

150W BENCH GRINDER



230V~50Hz
150W 2950RPM

RoHS ✓

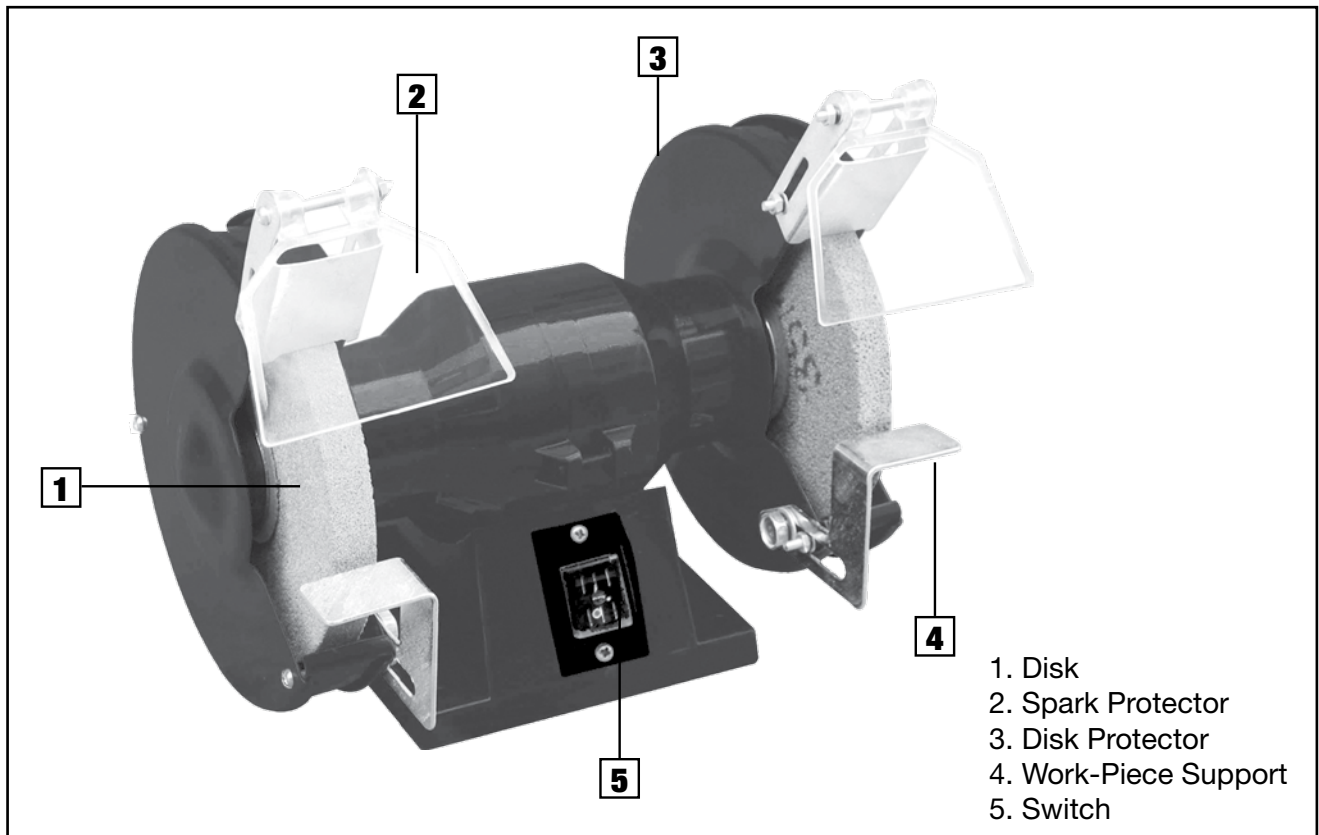


MARKSMAN B20 3BT UK

IMPORTANT SAFEGUARDS

Please read these operating instructions before using the tool for the first time and keep them with the tool at all times.

User instructions & Safety Hints



Technical Data	67012c
Power Supply	230v~50Hz
Power Input	150w
Speed	2950/min
S2	30min
Disc	Ø150 x Ø16 x 12.7mm
Weight	4.8kgs

Application:

This dry grinder is a combination tool for coarse and fine grinding. The tool was developed mainly for the machining and sharpening of knives, scissors, shears, chisels, etc. and tools with cutting edges. All other applications are expressly excluded.

Attention! Only grinding discs must be used which have been tested to MPA standards and which carry information about the maker, kind of bond, dimensions and permissible rotary speed.

SAFETY ADVICE

- Always wear safety goggles & ear defenders when using the grinder.
- Do not use damaged or un-shaped wheels; Before using the grinder each time the grinding disc must be given a sound test (fault-free discs emit a clear sound when lightly tapped with e.g. a plastic hammer). This also applies to new discs (as they may have been damaged during transport). The tool must be given a trial run without load for at least 5 minutes. Keep well clear of the danger zone during the trial run.
- Grinding discs must be stored in a cool, dry place at as even a temperature as possible.
- The grinding discs must be clamped on only with the clamping flanges supplied with the tool.
- Only clamping flanges of the same size and shape should be used to clamp the grinding discs. The lining between the clamping flange and the grinding disc must be of an elastic material e.g. rubber, soft cardboard. etc.
- The location hole in the grinding disc must not be re-bored.
- Grinding discs must not be used without protective equipment.
- The adjustment of the spark attester shall be made frequently, so as to compensate the wear of the wheel, keeping the distance between the guard and the wheel as small as possible, but in any case not greater than 2mm;
- The adjustment of the work rest shall be done gradually so as to compensate the wear of the wheel, keeping the distance between the work rest and the wheel as small as possible. but in any case not greater than 2mm;
- Before use the work-piece support and inspection glass must be screwed on. Always keep the spark protective glass clean.
- Warning: Remove the plug before carrying out any adjustment servicing and maintenance.
- Maximum permissible temperature of motor housing: 8° C. To ensure safe grinding, especially in stationary use, it is recommended to screw the tool down.
- The maximum wear of the wheels is 1/3 wheel size. so when the wheel wear up to 20mm, please replace the wheel.
- To avoid injury from accidental contact with moving parts.
- Make sure switch is in of position before plugging in.
- make sure the power supply is same as which mentioned on the machine, Use only 3-wire extension cords which have 3 prong earth type plugs. Replace damaged or worn cord immediately.
- The tool must not be operated for more than 30 minutes

Installation

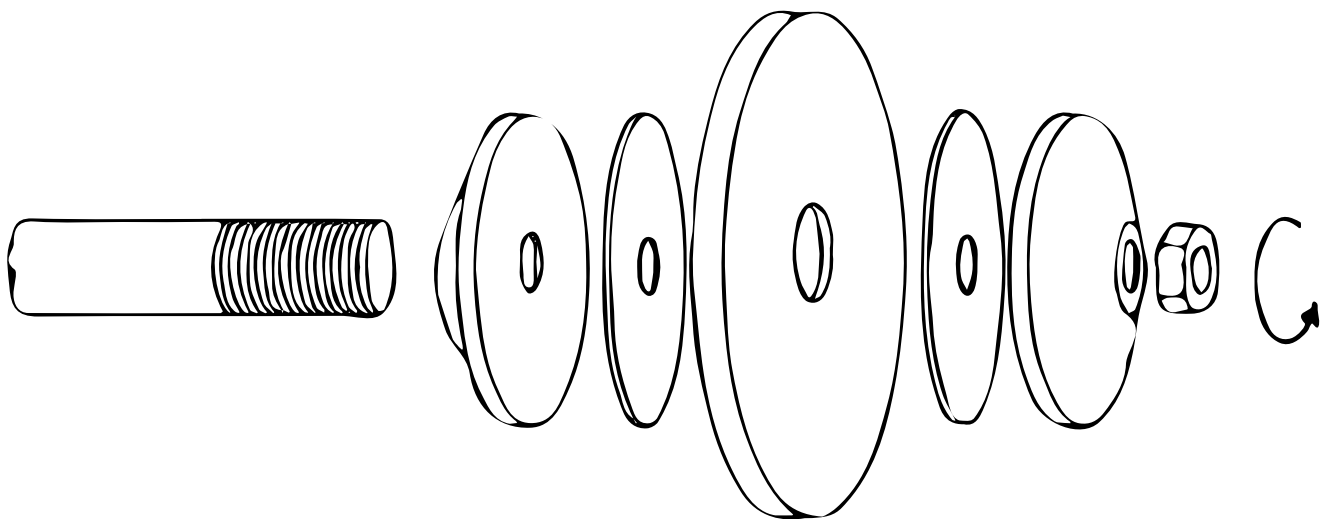
- Always place the tool on a stable work surface. For stationary use fasten the tool to the bench with four fixing screws.
- Fit the spark protector to the tool so that there is a maximum distance of 2mm between the grinding disc and the protector.
- Now secure the work-piece supports ensuring that here too there is a maximum distance of 2mm between the grinding disc and the support.
- The rating data for your power supply must be the same as those on the tool.

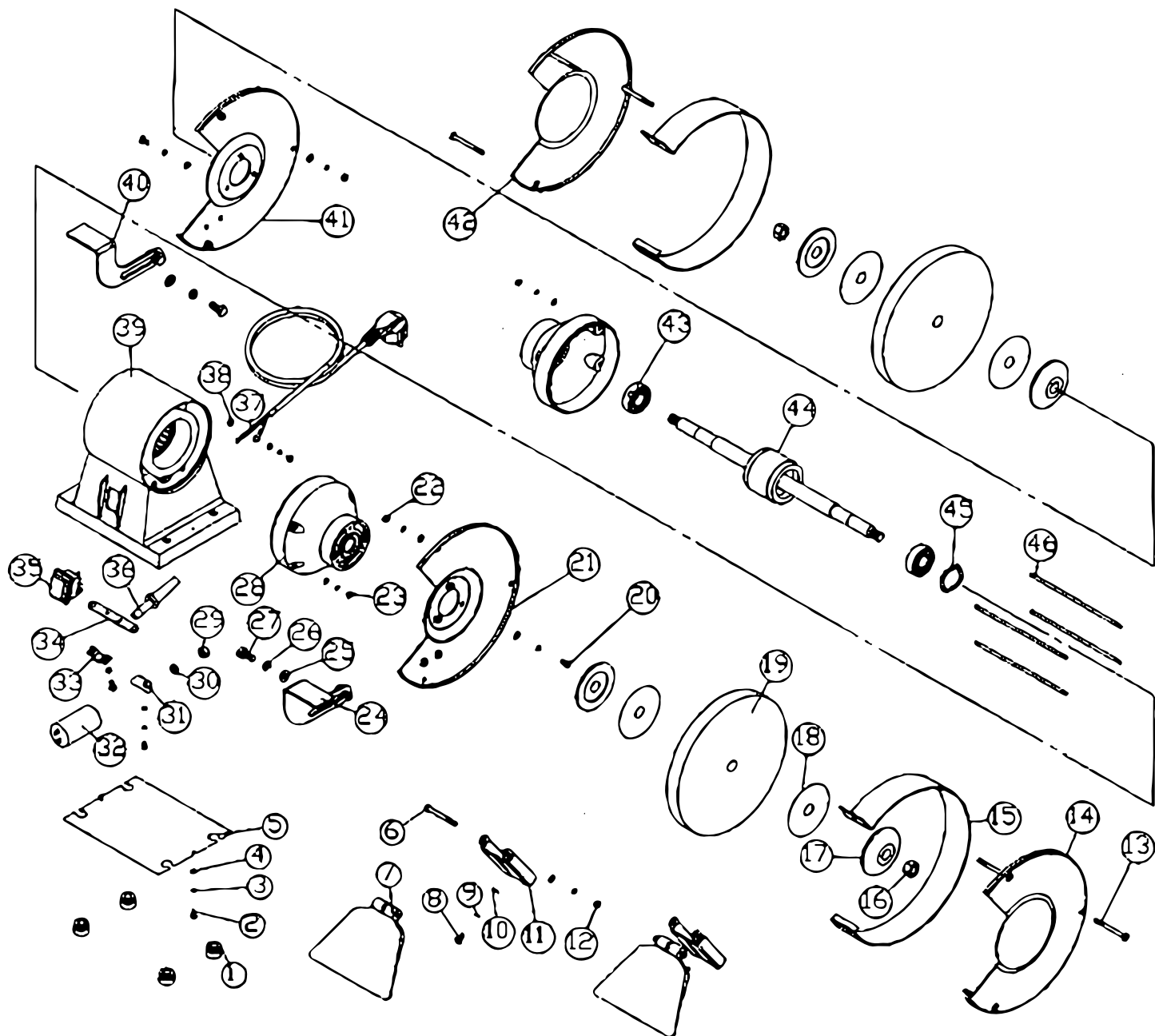
Hints for operation

- The mains voltage must match that shown on the type-plate of the tool
- Check the maximum distances for the safety equipment.
- Do not run the tool for long periods at a time. To avoid overheating the tool should not be kept switched on for longer than 15-30 minutes at a time. Allow the tool to cool down between each operations.
- Press the work-piece carefully against the grinding disc. using adequate pressure. Remember that the work-piece gets very hot during grinding. Cool the work-piece form time to time by dipping it in cold water.

Maintenance

- Remove grinding dust regularly from the housing and moving parts with a brush, or wipe the housing and moving parts with a damp cloth. Do not use solvents! Afterwards allow to dry thoroughly.
- Wheel replacement: If you must replace a wheel be sure to obtain one with a safe rated speed at least as high as the no load speed marked on the nameplate and with right disc size.





PART LIST

- | | | |
|-------------------------|-------------------------|-----------------------|
| 1. Rubber Feet | 17. Flange | 33. Sleeve Clamp |
| 2. Screw | 18. Pad | 34. Clamp Bracket |
| 3. Spring Washer | 19. Wheel | 35. Switch |
| 4. Washer | 20. Screw | 36. Cord Sleeve |
| 5. Base Plate | 21. Inner Guard (right) | 37. Plug & Cord |
| 6. Screw | 22. Washer | 38. Tooth Washer |
| 7. Eye-shield | 23. Nut | 39. Base |
| 8. Screw | 24. Tool Rest (right) | 40. Tool Rest (left) |
| 9. Spring Washer | 25. Washer | 41. Inner Guard(Left) |
| 10. Washer | 26. Spring Washer | 42. Outer Guard(Left) |
| 11. Eye-shield Bracket | 27. Screw | 43. Bearing |
| 12. Nut | 28. Motor Cover | 44. Rotor |
| 13. Screw | 29. Nut | 45. Under Spring |
| 14. Outer Guard (right) | 30. Spring Washer | 46. Double Head Screw |
| 15. Ring Guard (right) | 31. Capacitor Holder | |
| 16. Nut | 32. Capacitor | |

SAFETY INSTRUCTIONS

Warning! When using electric tools, basic safety precautions should always be followed to reduce the risk of fire, electric shock and personal injury, including the following. Read all these instructions before attempting to operate this product and save these instructions.

For safe operation:

- 01. Keep work area clean** - Cluttered areas and benches invite injuries.
- 02. Consider work area environment** - Don't expose power tools to rain. Don't use power tools in damp or wet locations. Keep work area well lit. Don't use power tools in presence of flammable liquids or gases.
- 03. Guard against electric shock** - Prevent body contact with earth surfaces (e.g. pipes, radiators, ranges refrigerators)
- 04. Keep children away** - Do not let visitors contact tool or extension cord. All visitors should be kept away from work area.
- 05. Store idle Tools** - When not in use, tools should be stored in dry, high, or locked-up place, out of the reach of children.
- 06. Don't force tool** - It will do the job better and safer at the rate for which it was intended.
- 07. Use the right tool** - Don't force small tools or attachments to do the job of heavy duty tool. Don't use tools for purposes not intended for example, don't use circular saw for cutting tree limbs or logs.
- 08. Dress properly** - Do not wear loose clothing or jewellery. They can be caught in moving parts. Rubber gloves and nonskid footwear are recommended when working outdoors. Wear protective hair covering to contain long hair.
- 09. Use safety glasses** - Also use face or dust mask if cutting operation is dusty.
- 10. Do not abuse the cord** - Never Carry tool by cord or yank it to disconnect it from receptacle, Keep cord from heat, oil and sharp edges.
- 11. Secure work** - Use clamps or a vice to hold work, it's safer than using your hand and it frees both hands to operate tool.
- 12. Do not overreach** - Keep proper footing and balance at all times.
- 13. Maintain tools with care** - Keep tools sharp and clean for better and safer performance. Follow instructions for lubricating and changing accessories. Inspect tool cords periodically and if damaged, have repaired by authorised service facility. Inspect extension cords periodically and replace if damaged. Keep handles dry, clean and free from oil and grease.
- 14. Disconnect tools** - When not in use, before servicing, and when changing accessories such as blades, bits and cutters.
- 15. Remove adjusting keys and wrenches** - Form the habit of checking to see that keys and adjusting wrenches are removed from tool before turning it on.
- 16. Avoid unintentional starting** - Don't Carry plugged-in tool with finger on switch. Be sure switch is off when plugging in.
- 17. Outdoor use extension cords** - When tool is used outdoors, use only extension cords intended for use outdoors and so marked.
- 18. Stay alert** - Watch what you are doing, Use common sense. Do not operate tool when you are tired.
- 19. Check damaged parts** - Before further use of the tool, a guard or other part that is damaged should be carefully checked to determine that it will operate properly and perform its intended function. Check for alignment of moving parts, binding of moving parts, breakage of

parts, mounting, and any other conditions that may affect its operation.

- A guard or other part that is damaged should be properly repaired or replaced by an authorised service centre unless otherwise indicated elsewhere in this instruction manual. Have defective switches replaced by an authorised service centre. Do not use tool if switch does not turn it on and off.

20. Warning - The use of any other accessory or attachment other than that recommended in this operating instruction might present a risk of personal injury.

21. Have your tool repaired by an expert - This electric appliance is in accordance with the relevant safety rules. Only experts may carry out repairing of electric appliances otherwise it may cause considerable danger for the user.

22. connect the dust extraction device - Wherever there are facilities for fitting a dust extraction system, make sure it is connected and used.

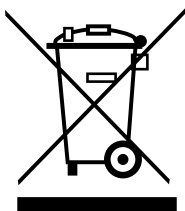
23. Noise level - The noise level of this power tool is measured according to IEC 59 co 11, IEC 704, DIN 45635 Part 21, NFS 31081 (84/537IEWG). Noise level at work area can exceed 85 dB (A). In that case operators should protect themselves against damage to hearing - wear ear defenders.

WARNING:

**THIS PRODUCT OPERATES AT 230 VOLT AC SINGLE PHASE MAINS VOLTAGE.
READ ALL THE SAFETY INSTRUCTIONS BEFORE USING THE MACHINERY.
OBSERVE ALL THE LOCAL SAFETY REGULATIONS.**

This product is "CE" marked and complies with all the relevant European CE directives for LVD, EMC and Machinery safety.

CORRECT DISPOSAL OF THIS PRODUCT



This marking indicates that this product should not be disposed with other household wastes throughout the EU. To prevent possible harm to the environment or human health from uncontrolled waste disposal, recycle it responsibly to promote the sustainable reuse of material resources. To return your used device, please use the return and collection systems or contact the retailer where the product was purchased. They can take this product for environmental safe recycling.

UK PLUG REWIRING

Your appliance operates on 220-240V-50Hz AC Mains and comes fitted with a 3-pin BSI Approved plug, so that it is ready for use by simply plugging into AC Mains. Should you need to change or refit a plug, proceed as follows:

IMPORTANT:

The wires in the mains lead are coloured in accordance with the following code:

BLUE : NEUTRAL (N)

BROWN : LIVE (L)

GREEN & YELLOW : EARTH (E)

As the colours of the wires in the mains lead of this appliance may not correspond with the coloured markings identifying the terminals in you plug, proceed as follows:

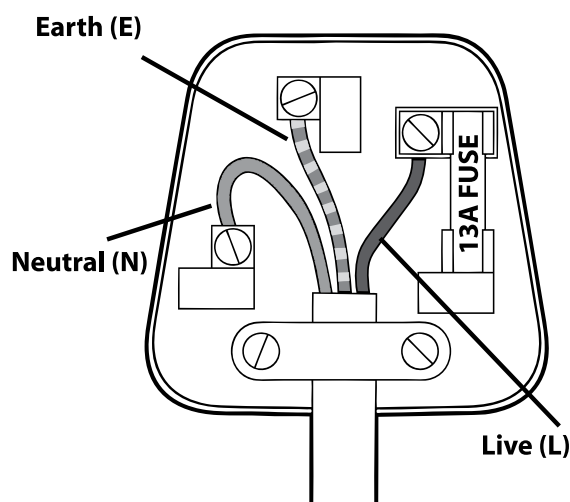
The wire which is coloured BLUE must be connected to the terminal which is marked with the letter "N" or coloured BLACK.

The wire which is coloured BROWN must be connected to the terminal which is marked with the letter "L" or coloured RED.

The wire which is coloured GREEN & YELLOW must be connected to the terminal which is marked with the letter "E" or  or coloured GREEN.

Always ensure that the Mains Cord is located into the Plug through the Cord Guard or Cable Clamp, and that the Cord Guard screws are tightened to clamp the Cord (outer sheath and inner coloured wires) in position in the Plug. Make sure the Plug top is also fitted securely.

This appliance must be protected by a 13-amp fuse in a 13-amp type (BS1363) plug. Should you need to replace the fuse, use only an ASTA approved BS 1362 fuse.



150W BENCH GRINDER

67006c

RoHS✓

CE



MARKSMAN B20 3BT UK



MARKSMAN
QUALITY TOOLS